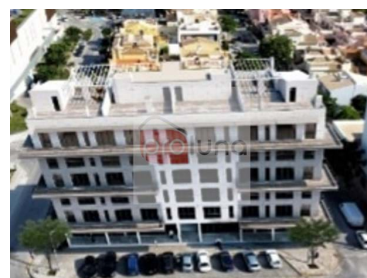





Olhão - Land


 **2437**

Area (m²)

 **712**

Land Area (m²)

1 065 000 €

(EUR €)

Plot of land for construction very well located in Olhão.

Plot of land for construction very well located in Olhão.

Feasibility of construction of 2437m² of housing, 712m² of commerce, basement for parking and storage, on 8 floors.

24 dwellings being 10 T2, 5 T3, 5 T4 and 4 stores.

The rooftop apartments have access to a private terrace measuring 80m² each, with great views of the city and the sea.

Great location near Shopping Center, with great access.

Excellent investment!


Carlos Junior

939602847 ²

c.junior@proluna.com

T +351 281957149 ¹ · E info@proluna.com
**rua 1 de maio, 32
AMI AMI 10970**
¹ (Call to national fixed network) | ² (Call to national mobile network)



TER_390323

Reference

Scan the QR code to view the property



Property Features

- Views: Sea views, Mountain views, City view
- Solar orientation: North, South, East, West
- Main drainage
- Mains water



Carlos Junior

939602847 ²

c.junior@proluna.com

T +351 281957149 ¹ · E info@proluna.com

**rua 1 de maio, 32
AMI AMI 10970**

¹ (Call to national fixed network) | ² (Call to national mobile network)