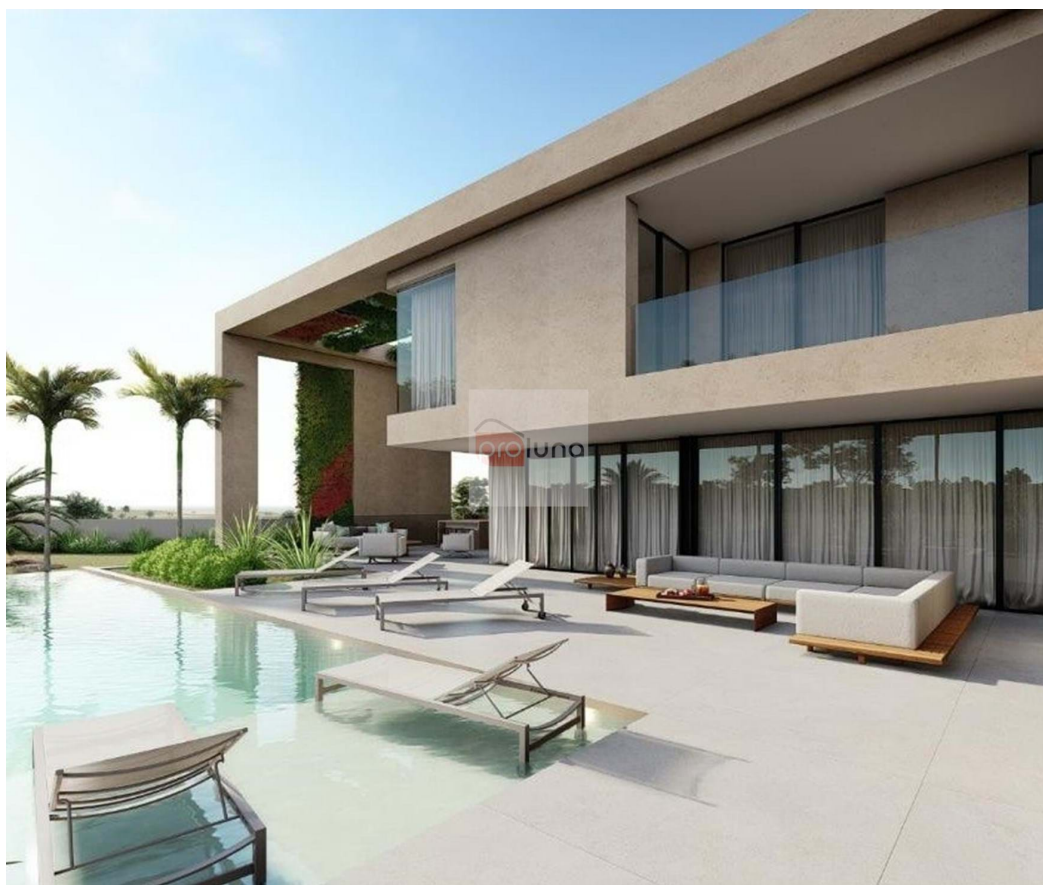





## Vila Nova de Cacela - Plot



 1551

Area (m²)

**750 000 €**

(EUR €)

## PLOT FOR SALE - PLOT 9 - MONTE REI GOLF RESORT - VILA REAL DE SANTO ANTÓNIO

Plot of land for the construction of a single-family house of maximum typology T5 (five bedrooms), with 2 floors and basement. (construction of approximately 500m2 allowed)

This plot with an area of 1551m2 is in the Monte Nicklaus Urbanization in the famous Monte Rei Golf resort, in the authentic Eastern Algarve. Monte Rei has about 400 hectares of picturesque landscapes with views of the countryside and the sea.

Monte Rei is consecutively considered the best course in Portugal since its opening.

As the North Golf Course is already recognised as the best golf course in Portugal, Monte Rei is now preparing the construction of the 18 hole South Golf Course, which will be located next to the Urbanization Monte Nicklaus, also signed by Jack Nicklaus, thus cementing its position as a golf destination of choice in Europe.

T +351 281957149 <sup>1</sup> · E [info@proluna.com](mailto:info@proluna.com)

rua 1 de maio, 32  
AMI AMI 10970

<sup>1</sup> (Call to national fixed network) | <sup>2</sup> (Call to national mobile network)



From Lote 9 you can reach in a few minutes by car any of the fantastic beaches that can be found in this part of the Algarve, be it Monte Gordo, Praia Verde, Manta Rôta or the beach of Fábrica in Cacela Velha, a special and magical place where ends ... or begins the Ria Formosa Natural Park. Monte Nicklaus / Monte Rei is a unique place to live and relax, where well-being and a balanced lifestyle are taken into account in all aspects of the resort - a true oasis of tranquility, a private and safe haven for live in communion with nature.

This plot of land is sold with the offer of the architectural project.

## Property Features

**T +351 281957149 <sup>1</sup> · E [info@proluna.com](mailto:info@proluna.com)**

**rua 1 de maio, 32  
AMI AMI 10970**

<sup>1</sup> (Call to national fixed network) | <sup>2</sup> (Call to national mobile network)